



Established in 1987, Parks Industries manufacture, service and repair hydraulic cylinders for the mining industry for use on fixed plant as well as mobile equipment.

Our strength is in our commitment to high quality products and service. With 25 years of accrued experience and a dedicated team of management and staff, Parks Industries continues to excel in design and production, utilizing the latest advancements in machine and software technology. Parks Industries has also contributed significantly to the Western Australian engineering and mining industry by providing apprenticeships and traineeships to school leavers and adults.

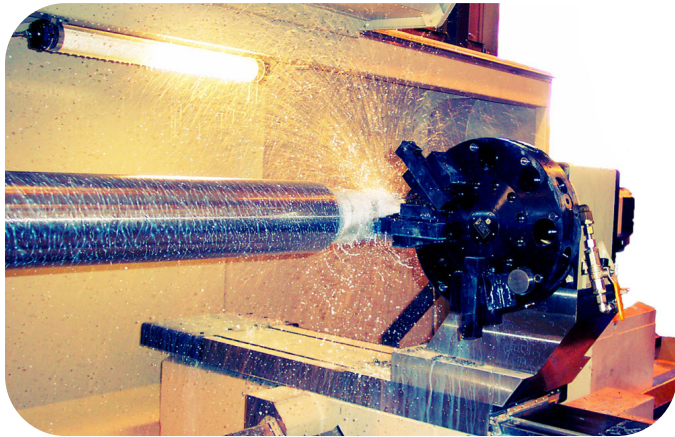
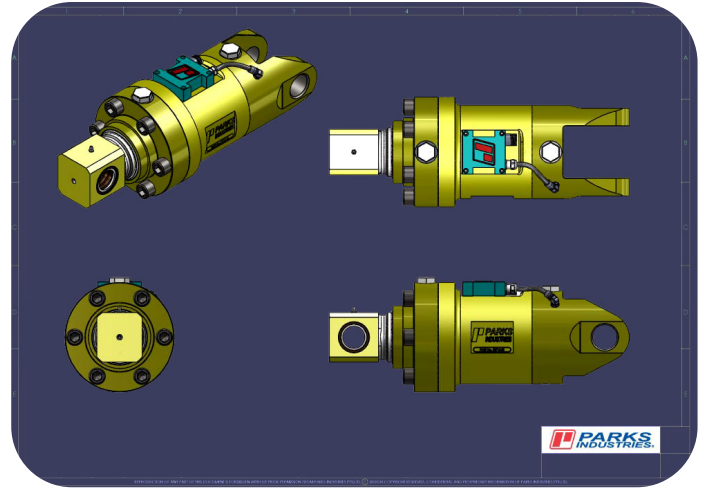
To maintain our position as the leading supplier of high performance hydraulic cylinders to the mining industry we operate a continuous improvement policy. Our approach of forward thinking, focus and attention to detail constantly delivers solutions. Blue chip mining companies can rely on Parks Industries' expertise.

Celebrating 25 Years

DESIGN

The latest in 3D technology, SolidWorks as well as AutoCAD gives our senior engineers and design team the tools to meet the needs of our clients.

Designs are modelled in 3D to enable the client to see the design process and make relevant changes which ensures our cylinder meets their requirements and specifications. Using SolidWorks we can also integrate customer supplied models with our own designs to ensure assembly integrity.



MANUFACTURING

The introduction of CNC machine tools has enabled us to offer our clients improved and complex designs while maintaining product competitiveness.

Benefits of CNC include:

- Batch repeatability
- Complex designs/profiling
- Manifolding and Porting
- Speed and accuracy

FITTING & TESTING

Hydraulic cylinder components are inspected before assembly begins. Components are checked using micrometers and electronic surface gauge testing equipment, then recorded on test sheets.

On completion of assembly, the hydraulic cylinder is fully pressure tested. If transducers are fitted they are electronically calibrated and tested. All data is recorded for product traceability purposes.

The cylinder is then grit blasted and painted to client specifications, packed and readied for dispatch.



CONTACT US

Head Office
Suite 14A Century Estate
51-53 Kewdale Road
Welshpool (Perth) Western Australia, 6106

Service Centre
266 Treasure Road
Welshpool
Western Australia, 6106

Phone : + 61 8 9353 3660
Fax: +61 8 9353 3115,
Email : enquiries@parksindustries.com.au
Website : www.parksindustries.com.au

